

**EXT  
RESCUE**

**4013**

**HexArmor**

The best extrication glove has to be more than just an extrication glove; an adaptable, versatile, and dexterous glove that you can trust – that's what first responders asked for. The answer is the EXT Rescue® 4013, with high-grip TP-X® palm for increased durability, and our advanced impact-protective technology. This multifaceted tool gives you level A8 cut-resistance on the palm, keeping you protected from threatening sharp edges. We also added an anti-debris SlipFit® cuff, for rapid on and off between missions. The most flexible rescue glove available, the EXT Rescue® 4013 also offers the comfort and durability to serve alongside our courageous first responders. With so many lives depending on you, HexArmor® wants your hands in dependable gloves.

#### Protection zones



ANSI/ISEA 105-2024  
CUT

**A8**



ANSI/ISEA 105-2024  
GRAM SCORE

**5201**



ANSI/ISEA 105-2024  
PUNCTURE

**2**



ANSI/ISEA 105-2024  
ABRASION

**6**



ANSI/ISEA 138-2019  
IMPACT

**1**



ANSI/ISEA 105-2024  
CONTACT HEAT

**2**

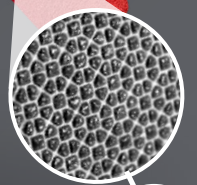


EN 388: 2016

**4X41FP**

#### Attributes

Style:	Mechanics
Grip:	Wet or dry
Cuff style:	SlipFit® and anti-debris
Sizes:	7/S through 11/XXL



SuperFabric®  
inside

#### Product features

- SuperFabric®\*\* brand materials provide industry-leading cut resistance (interior layer)
- Back-of-hand impact guards provide level 1 protection on knuckles and fingers
- Durable TP-X® palm with reinforced stitching pattern provides the ultimate dexterity and grip in wet/dry applications
- Reinforced index finger and thumb saddle for increased longevity
- SlipFit® and anti-debris cuff
- Hi-vis color and reflective tape on back-of-hand
- Launderable

Call **1.877.MY ARMOR** or visit **hexarmor.com**

HexArmor® products are cut and puncture resistant, NOT CUT AND PUNCTURE PROOF. Do not use with moving or serrated blades or tools. User shall be exclusively responsible to assess the suitability of the product as specified for any individual application or use. Protection zones are to be used as a general guide. Actual product protection zones may differ. Product features, design, protection zones subject to change.

Protected by patents and patents pending

\*SuperFabric® is a registered Trademark of HDM, Inc.